



THE CARAVANER

MESSAGE FROM YOUR WAGON MASTER

March 2009

Welcome Lazy Dazers to Butterfield!

Here we are with spring just a few days away and we're basking in the lovely warmth of the desert. (I wrote this message two weeks ago so I hope my optimism pays-off!) The desert flowers should be flourishing about now and if you haven't made the trip over to the Di Giorgio Road/Henderson Canyon Road area (Borrego Springs) to see the rainbow of color, you have missed Mother Nature at her best. You'll encounter acres and acres of the purple Sand Verbena, the white Dune Primrose, and the bright cheerful yellow Desert Sunflower are unquestionably a sight to behold; not to mention a myriad of "belly flowers" where you have to get down on your hands and knees to discover (be careful where you step!) If they got enough rain, the tall (6 to 20 feet) Ocotillo with its many stout spines should be showing off their red candle-like blooms at each tip; this wide-spread desert plant (not a cactus) is legally protected, so take only photographs. It's a bit early for the large Barrel Cactus (can be seen on the hillsides) to show-off their yellow/green ring of flowers; but if you're lucky you might find, in rocky areas, the small Beavertail Cactus with its bright magenta flowers. If you get a chance to see the Teddy Bear Cholla, a.k.a. jumping cactus, while its back-lit, it renders a soft and furry appearance – but don't touch! Its stems are heavily covered with straw colored sharp spines that readily detach from the parent plant. An easy way to remove a piece of cholla, if you should get stuck, is to place a comb beneath the joint and launch it in an "uninhabited" direction. Along the highway and covering hillsides there should be a profusion of Brittlebush showing off their vivid mass of yellow daisy-like flowers; and growing up and through other shrubs is the blue Phacelia a.k.a. Wild Heliotrope providing a mosaic of color. Deserts are often portrayed as barren and lifeless, nothing could be farther from the truth. There are flowers all around us; you just have to look more diligently than if you were in a well laid-out formal botanical garden; the desert in springtime is Mother Nature's extraordinary and unique botanical garden. I have with me a collection photographs that I have taken from previous spring outings along with some desert identifying flower books, maps, as well as some guide-books for the Anza-Borrego area that cover both highway and dirt-road exploring. If you would like to borrow any of them while were here, come see me.

The desert is not only home to some very remarkable flora species that have adapted to a most harsh and extreme environment, there have been some Homosapiens that have as well. Now for the segueOn Thursday night at 7:30, we will have the privilege to attend a special showing of an award winning documentary about the Marshall South family who lived on Ghost Mountain (just across the valley from here). The "Ghost Mountain Experiment" is a 76 minute film that was shot on the site of their primitive habitat; interviews with people that knew of them and their reclusive lifestyle plus aerial shots from a helicopter of the surrounding desert make this more than just a biographical film. John McDonald, producer, has graciously agreed to give us a private showing here in the club house and is asking for any donation to help off-set the \$16,000.00 dollars it cost to make this film. Or, you can drive the 30+ miles to the Anza-Borrego State Park Visitors Center Saturday night where the same film will be shown for a fee of \$10.00. Thursday the 19th, at 9:00 a.m. the park will conduct a walk with Volunteer Naturalists Mike & Jan Bigelow on a 2 mile round-trip, steep but scenic walk up Ghost Mountain to learn about the facts and fabrications about the Marshall South family; more information about this walk is at the Host Tent.

I do hope you get the opportunity to get out and enjoy this unique area; there is such a small window of opportunity where we humans can endure the extreme temperatures of freezing cold even snow in the winter and the intolerable heat in the summer. For us city dwellers we have maybe 4-5 months to experience this remarkable Anza-Borrego Desert which is in the extreme southwest corner of the third largest (120,000 square miles) U.S. desert, the Sonoran Desert. End of lesson!

Rosemary

A Word From Your Assistant Wagon Master



What a fantastic caravan we had at Buena Vista. You couldn't have ordered better weather than we had. It was raining when Gary and I went over the Grape Vine. We stopped at the rest stop at the top and took a few pictures of all the snow. It was beautiful. Ed Widmer put a small snowman on our windshield.

When Gary and I arrived at camp the rain had stopped and the rest of the week was awesome. It was perfect each and every day. The lakes, wildlife, cement pads to park on, trees and not to mention, 'grass' made it even more perfect. Some of the men went fishing. There were cute little ducks at the waters edge begging for a tidbit or two. There were no gophers this year that I saw, but we were privy to the ground squirrels running all around chasing each other. I think it was a prelude to spring courtship. I saw a gorgeous owl in flight with its mate and that was beautiful. Bob Lowe saw much more than that and told us all about his encounter at the General meeting. Ask him to tell you about it if you weren't there. Early each morning we heard the owl as well as all the birds feeding around the lake. It was so peaceful and quite restful. Gary and I are ready to go back.

Butterfield promises to be just as good as Buena Vista with a little bit more to do around the camp ground. There is a pool although it might be a little frosty! The oaks and sycamores could be a little challenging to those of us with satellite dishes as they just might be too dense to get a signal. Last year I moved my portable dish all over the place and finally found a spot at the base one of the large trees. A Lazy Daze pulled in to the spot and shadowed the dish. I thought for sure I had lost the signal but to my surprise I still had it.

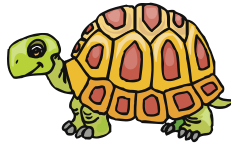
Enjoy your stay here at Butterfield and come to the movie later in the week for a grand evening. Have a great camp out, have fun and I will see you out and about.



Linda GeneSer
Assistant Wagon Master

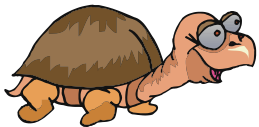
Painted Turtle

Team Turtle members have been at work making afghans and quilts for the Painted Turtle Camp for the 2009 season. Thanks to Rosie Reeder, Delores Thimlar and Mary Moffett from Buena Vista, we add eight more donations for the children. I am told they love these coverings and cuddle them like a stuffed animal. Two Lazy Dazers are making the Turtle Pillows. I will be sending some craft things as well such as paper, felt pens, paint brushes and paint.



The terminally ill children who attend these camps go for free. All services are donated including the doctors, medical services and camp personnel. Obviously the crafts and other camp activities equipment is donated. It is a major undertaking to organize this, but **WHAT A GREAT GIFT FOR KIDS WHO OTHERWISE WOULD NEVER HAVE SUCH AN OPPORTUNITY TO PLAY AND HAVE FUN WITH OTHER KIDS LIKE THEMSELVES.**

Lazy Daze Caravan Club receives letters of thank you regularly and we are listed in their news letter.



Jane, the Afghan Collector



Back Scratchers and Rueben trying to change a fuse in Don McCutcheon's rig. So how many guys do you need to change a little fuse anyhow?

Photo by Donna LaPort

Hardcastle Philosophies

BLADES according to JOE

A **BLADE** is a flat piece of material. It may or may not have a sharp (thin) edge. Propeller blades and fan blades do not have sharp edges.

A **KNIFE** is a blade with a sharp edge. The **EDGE** is where the solid material ends. The thinner the edge the sharper the knife, unless it becomes so thin it rolls over, and that depends on how hard the material is. If steel blades are hard they will stay sharp longer. (a boy named **HARDcastle** stays sharp longer. LOL)

A **KNIFE** may be tapered (sharpened) on one or two sides.

A **CHISEL** is tapered on only one side, the other side is the **CUTTING EDGE**. The angle of the tapered edge determines the angle of the cut, and it is usually **DRIVEN** or **PUSHED** into the material to be cut. A Knife on the other hand is usually used straight on into the material to be cut. **NEVER** try to sharpen the cutting edge of a chisel, only the tapered edge.

A **SAW** is a series of chisels either in a straight line or a circle (as on a table saw), or on a chain (as on a chain saw) Chisels can cut by "chiseling" or by "scraping" which they sometimes do on a saw. A knife should never be used to scrape, a scraper should be used (a blade with a square edge). To sharpen a saw always grind the tapered edge of the tooth, never the cutting edge.

A **RAZOR** is a blade designed to cut flush with the surface without cutting the surface.

To sharpen a steel blade usually you use an abrasive, such as a stone, a grinding wheel, or the handiest one sandpaper. A belt sander (upside down) will sharpen most knives, chisels, and garden tools quickly and to a razor edge. Any sander will do it if you can adjust it to the edge. A high speed rotary tool with a "cut off wheel" is handy to sharpen a chain saw blade or a "Phillips" screwdriver (just run the thin wheel between the teeth of a screwdriver and it will not slip anymore)

If you remember these hints, you too can always be **SHARP**.

In love and fellowship,

Joe Hardcastle—Rig 794



Washer Toss Couples

Washer Toss Couples Winners.

First Place: Claude and Carol Potts

Second Place: Bob and Frances Smith



Washer Toss



Regular Washer Toss Winners:

1st Place: Claude Potts & Zoe Caires

2nd Place: Bob Smith & Jean De Vos



WE SALUTE YOU

HOST TENT VOLUNTEERS FOR FEBRUARY

What a wonderful group of volunteers we had at Buena Vista. It is always a pleasure to see all the smiling faces. Thank you for all of your help. Your volunteers were:

Allen and Sue Mercer

Vern and Charlene Tutterrow

Betty Boshma

Bill Arthur

John and Catherine Mailliard

Margo Kody

Bob and Cynthia Casebolt

Irene Paulin

Mary Sue Ferrell

Dave and Laura Techentin

Herb and Darline Johnson

Dennis and Susan Kee

Greg and Sandy Young

Randy and Lynn Murray

Janet Baker

Jim and Cook

Roadrunners

Class 'C' Campers

All of you did an exceptional job and I thank you.

Linda GeneSer #2745
Assistant Wagon Master

Around the Camp

Photos by Donna LaPort



The coffee crowd.



Gary, Velna & Caryl with the Beautiful Lake Buena Vista in the background

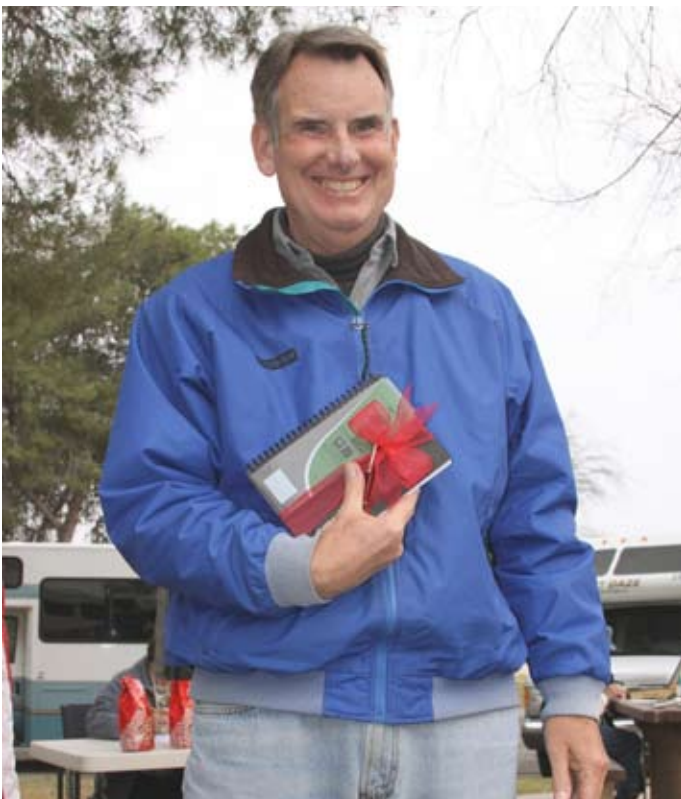


Roger, Toby & Millie "Waiting for the Rosemary's Morning Message"



Where Are We?

Submitted by Connie Johnson



The winner of “Where Are We” for February is Steve Tivy

Location: Crazy Horse Memorial, Black Hills, South Dakota

Submitted by John & Zoe Caires—Rig 2851

From the Editor

The deadline for articles is the Sunday following each Caravan. Thank you for your continuing support in the production of the Caravan.



David Hurley Rig #229
PO Box 3155
Ontario, CA 91761-0916
d.churley@verizon.net



Mother Nature

aka Lurlie Edgecomb #2285

Mother Nature was not surprised to see so many of her creatures out and about at Buena Vista. With a constant water source and steady supply of fish and other aquatic life available for food, we are able to view quite a variety of bird life. Our Friday nature walkers spotted several types of nests—none currently in use. We saw chunky, well-constructed ones and some flimsier ones and then there were the very different, pendulous, woven ones that perhaps are waiting for orioles to return. All were in deciduous trees awaiting spring and the leafing out which will help hide the nests from predators like the owls, ravens, crows and hawks.

I heard a frog croaking at lake's edge in the daytime and an owl hoot at night. A caught carp escaped the hook and a raccoon left behind his footprints. Robins chirped and pecked and grackles were their usual loquacious selves. Western grebes dove from the surface of the lake and killdeer called from overhead. Monarch butterflies showed off their beautiful orange and black wings. A vee of white pelicans floated overhead several times. Three members of the heron family were seen at lake's edge or flying over the lake: a great blue heron, as many as 6 great egrets (the big white ones) and the black-crowned night heron (the shortest of these). Coots were not a big problem this year—a smaller flock? Cormorants rested and dried their wings out on the buoys. Common mergansers floated on by showing us profiles of their rusty red heads and white breasts.

We are there too early in the year to see who occupies which nest. I suspect orioles may return to the hanging, woven ones. The flimsy nests may be the work of the mourning doves we all heard. Robins, white-crowned sparrows, house finches, and yellow-rumped warblers may have to compete for the others or build new nests.



Photo by Donna LaPort

The great-horned owls, whom some of you saw, will take over available hawk and raven nests. The owls lay their eggs earlier and are sooner looking to occupy a site in the tall pine trees. If you weren't in camp in February, check with Bob Lowe #2811 for details of the great-horned owl courtship that he was fortunate to witness. He tells it best.

Butterfield Village used to have vermilion flycatchers. Please let me know if you see this sparrow-sized red bird with a gray back. The turkeys may be around at the back of camp. We will certainly hear the coyotes. Black phoebes perch near the swimming pool and water sprinklers. Please let me know which of my creatures are out and about.

Anniversaries

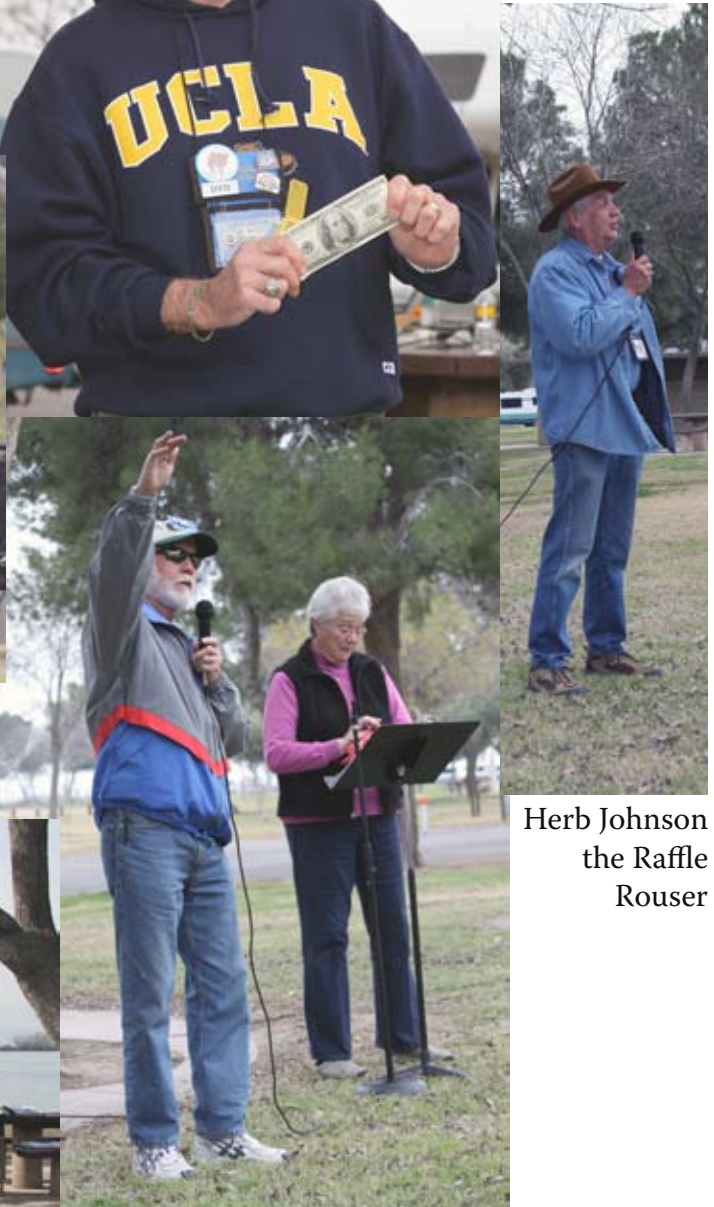


Bill and Frances Surbrook — 100 Caravans

Dave Spencer wins the \$100 Jackpot



The Birthday winner — John Mailliard



Herb Johnson
the Raffle
Rouser



Bob Lowe's Owl experience



Class C Campers Tour of West Kern Oil Museum

Agnes Hardt gave us a very informative tour of the Oil Museum in Taft. She gave us a lot of personal history and insight of the area and made our visit enjoyable. You may learn a great deal about the exhibit by visiting their website at <http://www.westkern-oilmuseum.org/>, then see it for yourself on the next outing to Buena Vista Aquatic Recreation Area.



Terry's Tech Talk

Tech Talk Article 40

Scan Gauge Transmission Temperature

03/2009

The transmission temperature is a critical piece of information that is not provided by original equipment instrumentation. One simple way to monitor the transmission temperature is with the Scan Gauge II (www.scangauge.com). The Scan Gauge II shows any four out of about a dozen standard functions that the vehicle's computer monitor and newer models with the XGauge feature can be programmed to monitor many more. The Scan Gauge costs about \$169 retail, but sometimes can be purchased for less on amazon.com. The Scan Gauge plugs into the On Board Diagnostic (OBD) port on 1996 and newer vehicles. It is a one cable simple plug in. The OBD port is typically located on the driver's side bottom edge of the dashboard.

A more detailed discussion of the Scan Gauge is in "ScanGauge.pdf" in the "Files" Section of "Techsnoz". This article has the "Error Codes" that trigger the "Check Engine" warning lamp in the dash board instrument cluster.

The first step in programming the X-Gauge feature is to determine the programming language that the engine computer is using. From the "HOME" screen, go "MORE>MORE>MODE" and it should show either "PWM" or "CAN". Older (2003? And earlier) use PWM and later models (2004? and newer) use CAN.

The next step is to program the X-Gauge function. I found it very helpful to copy the "codes" onto a piece of paper, use a "Sharpie", and make the characters large. It is helpful to have someone read the character string to you while you enter them. If you take too long when entering the characters, it "times out" and this can be frustrating. I found out that sometimes the "cursor" would not appear and I could not enter the character string, or I would make a "typo". If this happens, just go "OK>" to the next one and then "SAVE" at the end as you can come back and "Edit" each of the strings later.

From the "HOME" screen, go "MORE>MORE>MORE>XGAUGE".

Then in the top right, select the Memory (0-24) for this function. (I started with "1").

Next "<EDIT", this takes you to the "TXD" screen. The character strings are shown below:

	<u>TXD</u>	<u>RXF</u>	<u>RXD</u>	<u>MTH</u>	<u>NAME</u>
PWM:	C410F1221674	046205160674	3010	000100080000	TFT
-or-					
CAN:	07E0221674	046205160674	3010	000100080000	TFT

When entering the data, the buttons on the left are "+" and "-" to scroll characters up and down. On the top right is "->" to move to the next character position and below it is "OK>" which moves you to the next data type.

After entering the five character strings, the last step is to "SAVE".

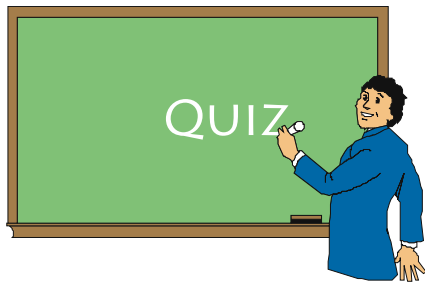
Go "MORE>MORE>MORE>XGAUGE" to revisit to check and/or change any of the character strings .

The Transmission Fluid Temperature (TFT) can now be assigned to one of the four "Gauge" buttons.

Techsnoz, the "Tech Talk" website.

Check it out at: <http://autos.groups.yahoo.com/group/Techsnoz/>
Terry Tanner Rig #2779





Q: My purpose is to silence, but I can also make you grin. I can try to make you laugh with a pie or banana skin. If I make you happy, I've done my job, but here's the trick, you won't be able to tell me. Doesn't that make you sick! What am I?

A:

Q: The two words that follow are an anagram of a US State Capital: Cloth Snare What is the capital?

A:

Q: What has roots nobody sees, Is taller than trees, Up, up it goes, And yet it never grows.

A:

Q: Find the set of three words, all with the same letters. The first is a kingdom, but not royally so. The first word spelled backward becomes a thin plate. Rearranging the consonants and leaving the vowels in place you'll get a type of paper.

A:

Q: Explain: 3=P of the ME (T,J,C)

A:

PLEASE REMEMBER
To Park So You Don't
Block The Exit Of
Another Rig

? EMERGENCY ?

Call on CB Channel 30

CODE RED: FIRE/GAS LEAK

CODE BLUE: MEDICAL

PLEASE Do Not Use the CB Until

The ALL CLEAR Is Sounded



Keep in the KNOW!
Pick up the latest news — from the
Lazy Daze website!



Art & Barbara Berggreen #2771

www.lazydazecaravanclub.org



Goodwill Ambassador Report

I hate to start my article with sad news, but sometimes it can't be helped. YVONNE SAUNDERS #1438, the former Assistant Wagon Master and wife to BILL SAUNDERS has past away and her services were held while we were at Buena Vista last month. For those who would like to send a card to Bill and their son you can use this address: 12423 Matteson Ave., Los Angeles, CA 90066-4411.



Firesider, FRANCES ROE #2094, had surgery before this last Christmas to remove a portion of her intestines. Sorry I was so late getting the message out, but it missed the article last month due to timing. Hopefully by the time you read this she will be feeling like new.

Outback, ROSEMARY KRAUSE #2348, was in the hospital for anemia caused by a bleeding ulcer and the side effects of arthritis medications.

Now for the two-for-one sale. It seems that At-Large member, BOB FILLER #2783 and Bun Buster, JIM RAMEY #2599, both had gall bladder surgery. I understand that Jim's was much more serious and that he will be hospitalized for a longer period than normal due to his complications.

Just a reminder that JOE & LAURETA GIBBS of the Road Runners continue to need your positive thoughts and prayers for their son, Greg's on-going recovery. It is a journey they must travel, that none of us wishes on them.

Mona Shaner
MonaL@sbcglobal.net

THE GHOST MOUNTAIN EXPERIMENT

We Have A Date! Thursday night, at 7:30 over in the club house, John McDonald will provide for us a private showing of his award winning documentary film about the Marshall South family. This 76 minute film tells the amazing story of how a man and his family left civilization to live a most incredible, primitive life style. Mr. McDonald will be showing the full feature-length version and is asking for a donation to help off-set the \$16,000.00 dollars it cost to make this informative, entertaining film. "We'll see you at the movies!"

SAFETY TEAM BULLETIN HEART ATTACK INFORMATION

How can you recognize a possible HEART ATTACK? Cardiologist, Dr. Bufalino, chairman of the Cardiac Care Committee of the American Heart Association recently outlined the following:

"A typical warning sign of an impending heart attack is an exertion-related pain in the chest. There may also be shortness of breath out of proportion to the amount of exertion expended. Furthermore, the shortness of breath alone may be the first sign - walking up a flight of stairs, carrying packages in from the car, doing anything physical which normally does not cause discomfort."

"Many people think a heart attack feels like an elephant standing on your chest. It does not. It can be a tightness, a pressure, a burning in the chest. The discomfort can spread to the arms, the back, the neck and occasionally the jaw."

"If you think you are having a heart attack, the most important thing to do, bar none, without question - don't wait - call 911! After calling, take an aspirin. It acts as a blood thinner and could be helpful. There is nothing else to do, try not to panic. Help is close by and getting excited works against you, although everybody having a heart attack is scared."

"A major problem among people having a heart attack is the fear of looking foolish - calling 911, being brought to an emergency room in an ambulance and then discovering it's a false alarm. We'd rather have nine false alarms out often! We want people to get to the hospital early. We take chest pains seriously. Some people having heart attacks sit at home for hours taking Alka-Seltzer and Maalox. Remember that early medical care is essential"

Your Safety Team reminds you to keep a current Health History form in the freezer unit of your refrigerator in your rig and in your home. Have them marked with a red cross for early recognition. Whatever your emergency, after calling 911 from home, make sure your front door is unlocked by someone to admit medical personnel.

PREPAREDNESS IS OUR WATCHWORD!

Marjorie & Don Richards
Safety Team members # 2315

